

Mid Monongahela River Access Sites

Access identification number denotes the approximate river mile from the mouth of the Monongahela River at Pittsburgh

 Fredericktown	Lat 40 00 02 Lon 79 59 48	At the intersection of Water St (PA 88 North) and Crawford Rd in Fredericktown. Carry down steps to dock. No ramp.
 Luzerne Twp	Lat 40 00 12 Lon 79 59 40	From downtown Brownsville take 2nd St west which turns into Alicia Rd/ Narrows Rd/Labelle Rd about 6.5 miles through the town of La Belle. Cont. on E Fredericktown Rd to public ramp just downstream from Ferry.
 Brownsville Wharf Park	Lat 40 01 18 Lon 79 53 20	From US-40, exit on Upper Market St to downtown Brownsville, head southwest on Lower Market St 0.25 miles, turn right on Bank St to wharf.
 PFBC West Brownsville	Lat 40 01 31 Lon 79 53 11	In Brownsville, take US-40 west to first California exit. Merge to Blaine Hill Rd, in 0.5 miles turn left on Bridge Blvd, then immed. left on Main St, in 0.2 miles turn right on Blaine Blvd. to access under Lane Bane Bridge.
 PFBC California	Lat 40 04 09 Lon 79 53 32	From PA-43, take exit 32 toward California, travel North on PA-88 (Wood St) for 2 miles, turn left on 1st St, travel four blocks to access.
 Dowler Park	Lat 40 04 15 Lon 79 53 58	From PA-43 take exit 32 toward California, merge onto 3rd Street Extension, in 0.4 miles turn left on High Point Dr, in 0.3 miles turn right on Spring St, travel 0.3 miles to access.
 Roscoe Riverview Park	Lat 40 04 37 Lon 79 51 51	From PA-43 take exit 34 toward Elco, turn right on Elco Hill Rd for 1.5 miles, continue on Highpoint Dr, continue on Chester Ave, turn right on Howard St. for a quarter mile, continue on Lower Coal St. to access.
 Fayette City	Lat 40 06 01 Lon 79 50 28	From I-70 take exit 41 to PA-906 South to PA-201 South to Fayette City. Take first right onto Johnson Hollow Rd, Johnson Hollow Rd turns slightly left and becomes Water St, travel 400 feet to access.
 Belle Vernon	Lat 40 07 36 Lon 79 52 24	From I-70 take exit 41 to PA-906 South to Belle Vernon, left on Main St, after a quarter mile turn right on 2nd St, travel 250 feet to access.
 PFBC Speers	Lat 40 07 31 Lon 79 52 35	From Charleroi, take PA-88 South about 1 mile. Go under PA Turnpike (I-70). Make 1st left on State St, which becomes River Ave. to access.
 Charleroi Comm. Park	Lat 40 08 31 Lon 79 53 50	From PA-43, take exit 39. Turn on Coyle Curtain Rd toward Charleroi, after 1 mile turn right on PA-88 South, after 2.5 miles turn left on 7th St, travel a quarter mile to access.



Photo: Clark Fisher

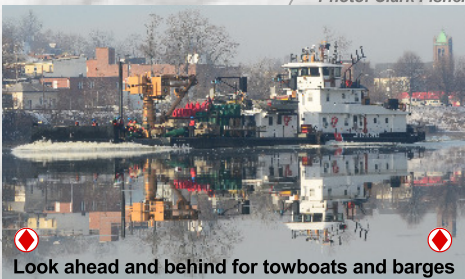
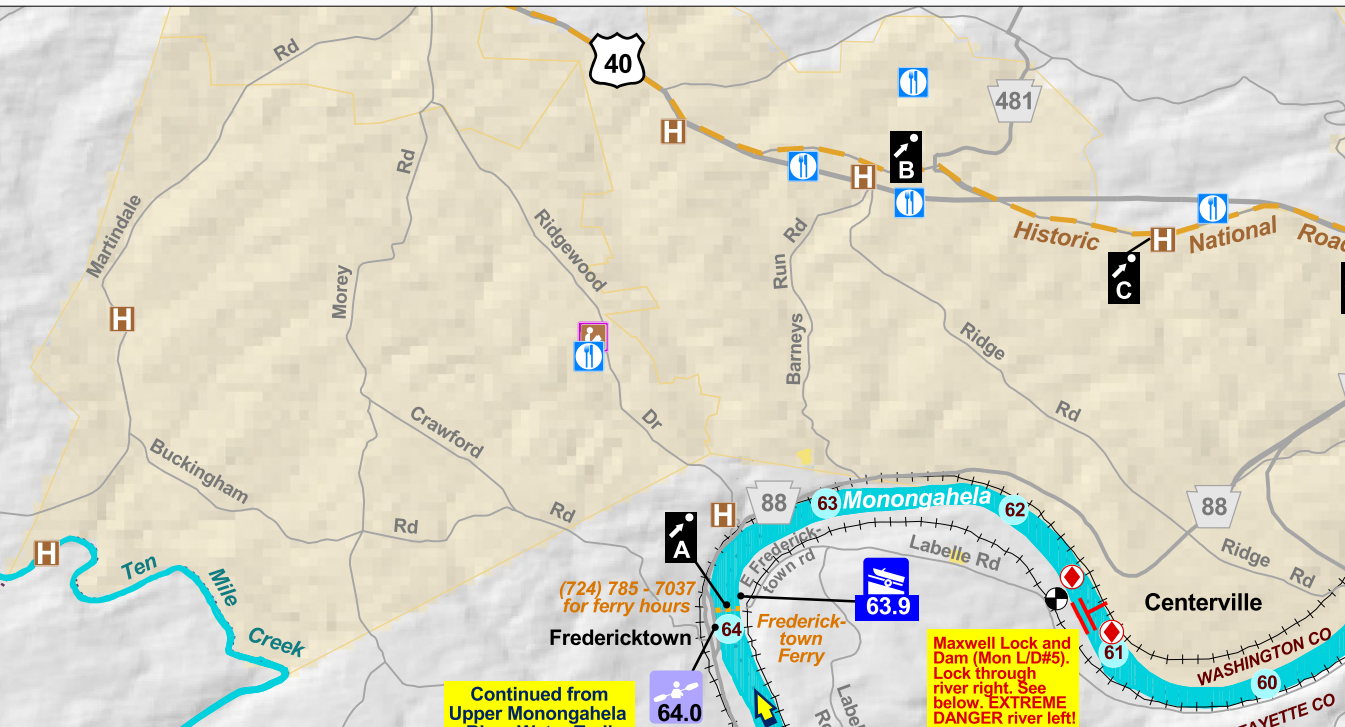


Photo: Clark Fisher

Mid Monongahela River Access Sites

Access identification number denotes the approximate river mile from the mouth of the Monongahela River at Pittsburgh

 PFBC Monessen	Lat 40 09 40 Lon 79 52 12	From I-70 take exit 41 (PA-906 North) toward Monessen, after 4.2 miles turn left on Monongahela St, travel 130 feet to access.
 Rostraver	Lat 40 11 12 Lon 79 51 05	From I-70 take exit 41 (PA-906 North) toward Monessen, after 6.8 miles turn left on Gilmer St. to access (in the small town of Webster).
 PFBC Gallatin Park	Lat 40 11 48 Lon 79 53 07	From I-70 take exit 41 (PA-906 North) toward Monessen, after 8.1 miles turn left on PA-136 West, after 1 mile turn left on Gallatin Rd.
 PFBC Monongahela	Lat 40 11 39 Lon 79 54 07	From the int. of PA-481, PA-88/837 and 1st St. in Monongahela, take PA-837 South 1.3 miles then turn left on Nelson St. to access.
 Monongahela Aquatorium	Lat 40 12 08 Lon 79 55 24	From the int. of PA-481, PA-88/837 and 1st St. in Monongahela, take 1st St. North then turn left on Railroad St. then 500' to access on right.
 Beach Club Marina	Lat 40 12 33 Lon 79 56 39	From PA-43 take exit 44 to PA-136 East to Monongahela, after 3 miles turn left on W Main St, in a 0.25 miles the Marina will be on the right.
 Tubby Hall Riverfront Pk	Lat 40 12 43 Lon 79 57 21	From PA-43 take exit 44 to PA-136 East to Monongahela, after 3 miles turn left on W Main St, in a mile turn right onto Howard St, Tubby Park will be on the left in 500 feet.
 Molnar's Marina	Lat 40 13 26 Lon 79 58 01	At PA-136 and PA-837 int. in Monongahela, take PA-136 East over the Monongahela City Bridge, then first left on Bunola River Rd, in 2.7 miles pass Elkhorn Rd, go 0.1 miles, turn left to Molnar's Marina.
 Carousel Marina	Lat 40 14 21 Lon 79 57 22	At PA-136 and PA-837 int. in Monongahela, take PA-136 East over the Monongahela City Bridge, then first left on Bunola River Rd, in 4 miles, turn left on Carousel Dr, the Marina will be on the right.
 PFBC Elizabeth	Lat 40 16 14 Lon 79 53 28	From the intersection of PA-837 and PA-51, take PA-51 South, cross the Monongahela River, take the Elizabeth Exit, go two blocks then turn left on S 2nd Ave. Go 6 blocks to the access area.
 Elizabeth Waterfront Park	Lat 40 16 25 Lon 79 53 15	From the intersection of PA-837 and PA-51, take PA-51 South, cross the Monongahela River, take the Elizabeth Exit to Market St to the park.
 Glassport Riverfront Park	Lat 40 20 13 Lon 79 53 31	From US-30, follow PA-148 through McKeesport 4.3 miles, cross 5th Ave Bridge to W 5th Ave. Continue 1.5 miles (turns into Monongahela Ave) then turn right on Harrison St. in Glassport to access.
 PFBC McKeesport	Lat 40 21 08 Lon 79 52 17	From US-30, follow PA-148 through McKeesport 4.3 miles, cross 5th Ave Bridge, turn right on River Rd, make first right at stop sign on Rebecca St, turn right on Atlantic Ave to Youghiogheny River access.



Locking Through Instructions

Check schedule for hours. www.lrp.usace.army.mil
Locking through is recommended for experienced paddlers only!

1. When heading downriver, the dam is difficult to see. Stay alert and keep track of your location (be visible and cognizant of others). Cross over to the correct side of the river that the lock is located on as much as one mile before you arrive and hug the shoreline. Keep an eye out for the "DANGER DAM" signs and the white and orange pillar buoys (they may be taken out of the river depending on the time of year and river flow).

2. Let the Lock Master know you are there by ringing the bell located at the end of the storm wall, calling them on the phone or the VHF radio channel 13 or by sounding one long blast from a boat whistle followed by one short blast. Advance communication is advised.

3. Approach the lock and be aware of the following signals: Red means stand clear and do not enter, Yellow means approach lock under full control and Green means proceed to enter lock directly. The Lock Master may also signal via air horn: One long blast means enter landward lock, two long blasts means enter riverward lock, one short blast means leave landward lock and two short blasts means leave riverward lock.

4. Carry on board at least 75 feet of neatly wound mooring line to secure your small craft safely along the lock wall. The Lock Master reserves the right to deny permission to pass through due to inadequate line. Once in the lock, give one end of the line to the Lock Master. He will feed through the mooring hook above then feed it back to you. Hold that end securely (or clip it to your boat) while feeding the other end through your hands - winding up or letting out depending on going up or down with the water level.

5. After being let up/down, the Lock Master will unhook your rope and let it drop to you. Try not to tangle the rope. Carefully stow the rope and wait for the Lock Master to give you an OK before proceeding. Leave at a slow and consistent speed staying close yet visible beside the storm wall. Do not stop until you are well away from the pull of the dam's current and other boat traffic.

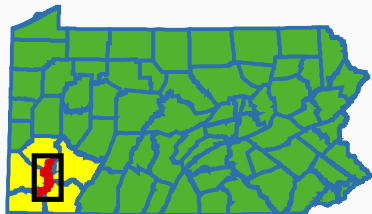
Welcome and Information Center

River Access Site with Ramp and Parking (ID Number is the Approximate River Mile - See Chart for Directions)
Carry In Access (steps) with Dock (No Ramp) and Parking (ID Number is the Approx. River Mile - See Chart for Dir.)
PFBC Access Sites Require PA Fish&Boat Comm. Launch Permit

- Canoe Livery / Outfitter
- Rifles / Waves
- Caution
- River-Wide Lock and Dam. Danger. See Locking Through Instructions
- Mileage from Monongahela River Mouth
- USGS Stream Flow Gauge Station (Internet Accessible)
- Camp Sites - With Restrooms
- Motels, Inns and Bed & Breakfasts
- Restaurants
- Point of Interest
- Historic Sites and Districts
- Public Library - Identification Required for Internet Access
- Hospital
- Rail Trail
- Historic Lincoln Highway
- Historic National Road
- County Boundary
- City or Borough
- Local Park



bobber.info



Mapping by FisherWorks Consulting April 2013

Points of Interest

- A Fredericktown Ferry (724) 785-7037
- B Centerville Historic District
- C Harrison House
- D Paci's Historic Lounge & Malden Inn
- E Dunlap Creek Bridge
- F Flatiron Heritage Visitors Center & Frank L. Melega Art Museum
- G Nemacolin Castle
- H Monongahela River, Railroad, and Transportation Museum
- I Historic Coke Ovens
- J Old Main, California University of PA
- K California Historical Society
- L California Area Public Library
- M Historic Coke Ovens
- N Monessen Heritage Museum
- O Cement City Historic District
- P Donora Smog Museum
- Q Whiskey Point
- R Monongahela Area Historical Society
- S Mounds Park Burial Ground
- T Monongahela Aquatorium
- U Elizabeth Waterfront Park
- V Carnegie Free Library
- W Renziehausen Park Rose Garden and Arboretum
- X McKeesport Regional History and Heritage Center

Caution Information
Locking through is recommended for experienced paddlers only (see instructions below). Wear bright colors and watch for commercial traffic at all times, especially near locks. Avoid the upstream side of bridge abutments.

Monthly Average Information for Charleroi, PA

	Jan	Feb	Mar	Apr	May	Jun	Jul	Aug	Sep	Oct	Nov	Dec
Avg. High(F)	38°	42°	51°	64°	73°	81°	84°	83°	77°	66°	54°	42°
Avg. Low(F)	21°	23°	30°	39°	50°	59°	63°	62°	55°	43°	34°	26°
Avg. Precip.(in)	2.6	2.4	3.2	3.2	4.1	3.8	3.8	3.4	3.0	2.6	3.2	2.7
Sunrise(AM)	7:40	7:12	7:31	6:41	6:04	5:50	6:03	6:31	7:01	7:31	7:05	7:35
Sunset(PM)	5:19	5:56	7:27	7:59	8:29	8:51	8:48	8:16	7:28	6:40	5:03	4:55
Gauge(CFS)	13600	15300	18000	13600	10500	6,500	4,410	4,010	3,090	3,620	6,870	11700

(Sunrise and Sunset are the 15th of each month - including daylight savings time)